



TAMPA BAY THE EASY WAY

DRAWING LIST

REVISION DATE	SHEET NO.	DRAWING TITLE
	1	TITLE SHEET
	2	AIRPORT DATA SHEET
	3	AIRPORT LAYOUT PLAN
	4	TERMINAL AREA PLAN
	5	AIRPORT AIRSPACE DRAWING: 1/3
	6	AIRPORT AIRSPACE DRAWING: 2/3
	7	AIRPORT AIRSPACE DRAWING: 3/3
	8	RUNWAY 18 INNER APPROACH: PLAN & PROFILE
	9	RUNWAY 36 INNER APPROACH: PLAN & PROFILE
	10	RUNWAY 4 INNER APPROACH: PLAN & PROFILE
	11	RUNWAY 22 INNER APPROACH: PLAN & PROFILE
	12	RUNWAY CENTERLINE PROFILES
	13	OBSTRUCTION DATA TABLES 1/2
	14	OBSTRUCTION DATA TABLES 2/2
	15	EXISTING - LAND USE & NOISE CONTOURS (2017)
	16	FUTURE - LAND USE & NOISE CONTOURS (2023)
	17	EXHIBIT A - AIRPORT PROPERTY INVENTORY MAP: 1/4
	18	EXHIBIT A - AIRPORT PROPERTY INVENTORY MAP: 2/4
	19	EXHIBIT A - AIRPORT PROPERTY INVENTORY MAP: 3/4
	20	EXHIBIT A - AIRPORT PROPERTY INVENTORY MAP: 4/4

**AIRPORT LAYOUT PLAN
ST. PETE-CLEARWATER
INTERNATIONAL AIRPORT**

PINELLAS COUNTY, FLORIDA

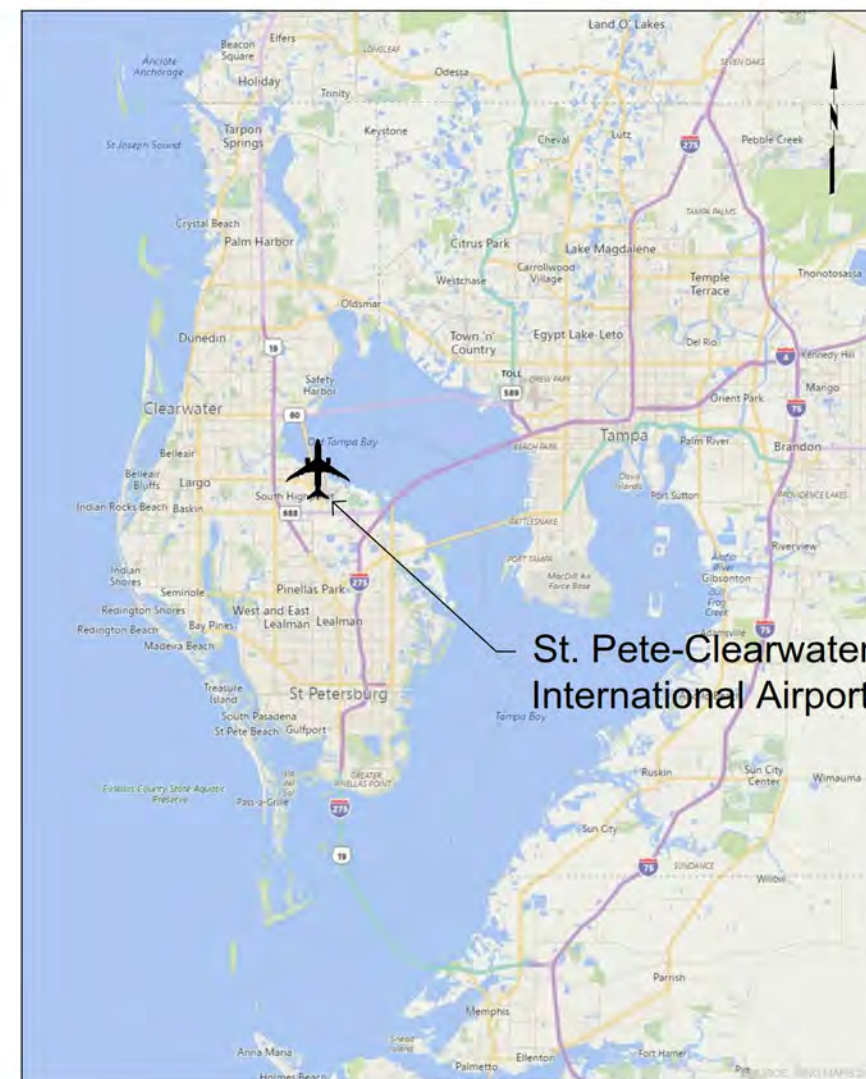


State of Florida

Pinellas County

STATE MAP

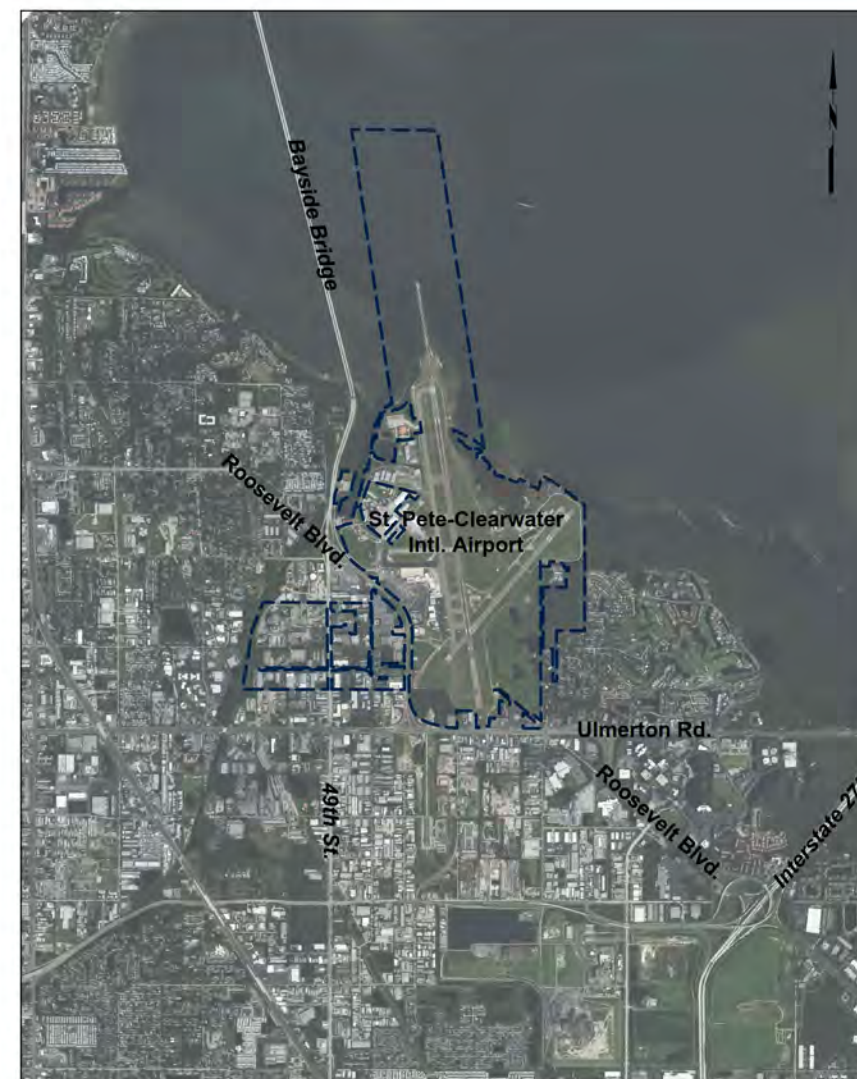
NOT TO SCALE



St. Pete-Clearwater
International Airport

LOCATION MAP

NOT TO SCALE



VICINITY MAP

SCALE: 1" = 3,000'



FAA AIP NO.: 3-12-0075-043-2017

C&S PROJECT: O42.001.001

SEPTEMBER 2020

File: 16_2020 - 4890m
 T:\Projects\O42 - St. Pete-Clearwater International\O42.001.001 - 2017 Master Plan\Pinellas County\O42.001.001 - 04201001 - PIE_The Easy Way

FUTURE FACILITIES TABLE			
ID	FACILITY DESCRIPTION	TOP ELEVATION (MSL)	OBSTRUCTION MARKING/LIGHTING
1	Terminal Ultimate Build	37.9'	None
2	Baggage Screening & Make Up	20.1'	None
3	Hangar	41.0'	None
4	Hangar	40.0'	None
5	Hangar	39.5'	None
6	Hangar	35.0'	None
7	Hangar	±35.0'	None
8	Hangar	±35.0'	None
9	Hangar	±35.0'	None
10	T-Hangars - 12 Units	±20.0'	None
11	T-Hangars - 14 Units	±20.0'	None
12	Vehicle Parking	Varies	None
13	Airfield Electrical Vault	±20.0'	None
14	Parking Structure (±1,000 Spaces)	±75.0'	None
15	Hangar	±35.0'	None
16	Hangar	±35.0'	None
17	Hangar	±35.0'	None
18	Hangar	±35.0'	None
19	GA Support Facility	±35.0'	None
20	Hangar	±35.0'	None
21	Hangar	±35.0'	None
22	Hangar	±35.0'	None

EXISTING FACILITIES TABLE			
ID	FACILITY DESCRIPTION	TOP ELEVATION (MSL)	OBSTRUCTION MARKING/LIGHTING
1	National Aviation Academy	28.9'	None
2	Building	30.4'	None
3	Air Traffic Control Tower (ATCT)	31.8'	None
4	Airfield Electrical Vault	21.6'	None
5	Hangar	29.5'	None
6	Hangar	46.4'	None
7	Signature Hangar	48.1'	None
8	Signature Hangar	47.1'	None
9	Hangar	48.1'	None
10	Hangar	43.8'	None
11	Building	36.2'	None
12	Passenger Terminal	50.0'	None
13	Allegiant Support Facility	N/A	None
14	Pinellas County Sheriff's Office Hangar	31.8'	None
15	ARFF	33.8'	None
16	Corporate Hangars	36.8'	None
17	Sheltair Hangar	37.2'	None
18	US Army Reserve	29.0'	None
19	Hangar	62.2'	None
20	Hangar	61.1'	None
21	USCG Hangar	65.0'	None
22	USCG Hangar	61.3'	None
23	USCG Facilities	33.8'	None
24	T-Hangar	29.6'	None
25	Restaurant	30.0'	None
26	Hangars	60.0'	None
27	Bank	31.0'	None
28	Hotel	46.0'	None
29	Restaurant	32.0'	None
30	Storage Building - To Be Removed	19.9'	None
31	Fuel Farm	N/A	None
32	Airport Maintenance Facility	N/A	None
33	Storage Building - To Be Removed	21.6'	None

LEGEND		
EXISTING	FUTURE	DESCRIPTION
X	X	Fence (7.5± FL)
---	N/A	Airport Property Line
---	FRSA	Runway Safety Area
---	PROFA	Runway Object Free Area
---	PROFZ	Runway Obstacle Free Zone
---	FTSA	Taxiway Safety Area
---	FTOFA	Taxiway Object Free Area
---	FRPZ	Runway Protection Zone
---	AS	Part 77 Approach Surface
---	FTSS	Threshold Siting Surface
---	FRBL	Building Restriction Line (25')
---	PAPI	PAPI Obstacle Clearance Surface
---	N/A	Precision Obstacle Free Zone
---	N/A	Line of Sight
---	N/A	Runway Visibility Zone
---	N/A	Localizer Critical Area
---	N/A	Glide slope Critical Area
---	N/A	NAVAID Critical Area
---	N/A	MALS/R
---	---	Runway Threshold / End Lights
---	---	Navigational Aid
---	---	Non-Aeronautical Development
---	---	Roads and Vehicle Parking
---	---	Buildings and Terminal
---	---	Apron and Aircraft Parking
---	---	Taxiways
---	---	Runways
---	N/A	Tree Stand Area
---	N/A	Water Features
---	---	Airport Reference Point
---	---	Survey Monument
---	---	Spot Elevation (MSL)
---	---	Pavement to Be Removed

General Notes:
 1. All elevations shown in height above mean sea level (NAVD 88) unless otherwise noted.
 2. All coordinates in NAD 83.
 3. All units are feet unless otherwise indicated.
 4. Glideslope within ROFA due to physical constraint.

SURVEY MONUMENTS			
ID	LATITUDE	LONGITUDE	ELEV.
1	AG6631 (PAC)	27° 54' 06.35597" N 82° 41' 11.15507" W	7.48
2	AA4604 (SAC)	27° 54' 36.01162" N 82° 41' 11.79450" W	6.1
3	AA4605 (SAC)	27° 55' 24.56006" N 82° 41' 24.61384" W	3.9

The contents of this plan do not necessarily reflect the official views or policy of the FAA. Acceptance of this document by the FAA does not in any way constitute a commitment on the part of the United States to participate in any development depicted herein nor does it indicate that the proposed development is environmentally acceptable in accordance with appropriate public laws.

FAA's approval of this Airport Layout Plan (ALP) represents acceptance of the general location of future facilities depicted. During the preliminary design phase, the airport owner is required to submit for approval the final locations, heights and exterior finish of structures. FAA's concern is obstructions, impact on electronic aids or adverse effects on controller view of aircraft approach and ground movement areas which could adversely affect the safety, efficiency or utility of the airport.

FAA APPROVAL STAMP

PINELLAS COUNTY
 SUBMITTED BY: _____
 DATE: _____

REVISIONS	NO.	DATE	DESCRIPTION

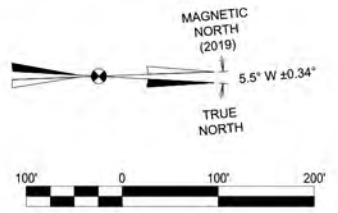
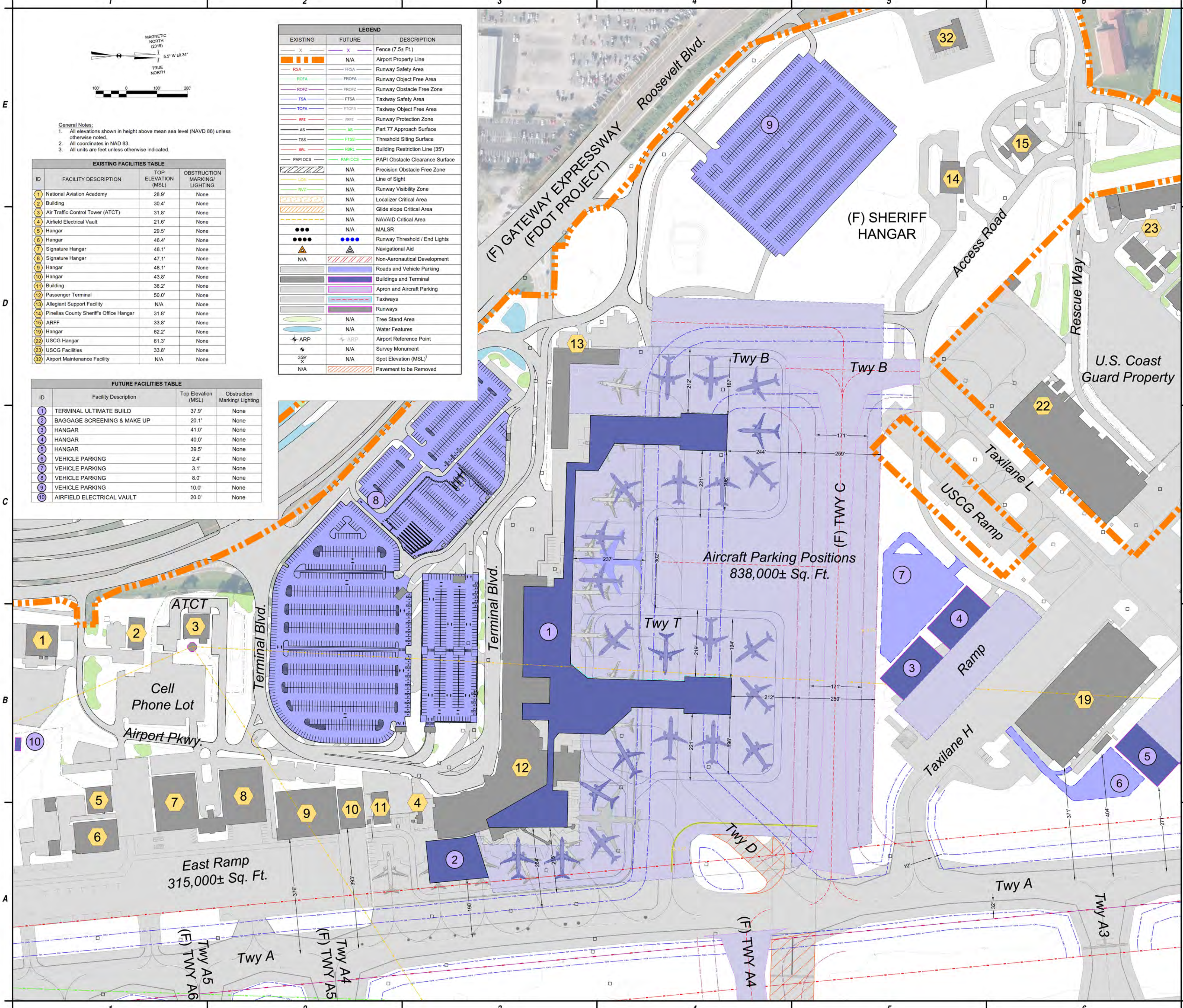
PROJECT NO:	042.001.001
DATE:	SEPTEMBER 2020
DRAWN BY:	J.J. SHURER
DESIGNED BY:	G.M. BUTLER
CHECKED BY:	N.M. ALEX

LEGEND		
EXISTING	FUTURE	DESCRIPTION
X	X	Fence (7.5± Ft.)
---	---	Airport Property Line
RSA	FRSA	Runway Safety Area
ROFA	PROFA	Runway Object Free Area
ROFZ	PROFZ	Runway Obstacle Free Zone
TSA	FTSA	Taxiway Safety Area
TOFA	FTOFA	Taxiway Object Free Area
RPZ	FRPZ	Runway Protection Zone
AS	AS	Part 77 Approach Surface
TSS	FTSS	Threshold Siting Surface
BR	FRBL	Building Restriction Line (35')
PAPI OCS	PAPI OCS	PAPI Obstacle Clearance Surface
N/A	N/A	Precision Obstacle Free Zone
---	---	Line of Sight
---	---	Runway Visibility Zone
---	---	Localizer Critical Area
---	---	Glide slope Critical Area
---	---	NAVAID Critical Area
---	---	MALSR
●●●●	●●●●	Runway Threshold / End Lights
▲	▲	Navigation Aid
N/A	---	Non-Aeronautical Development
---	---	Roads and Vehicle Parking
---	---	Buildings and Terminal
---	---	Apron and Aircraft Parking
---	---	Taxiways
---	---	Runways
---	---	N/A Tree Stand Area
---	---	N/A Water Features
+	+	Airport Reference Point
+	+	Survey Monument
359'	+	Spot Elevation (MSL)
N/A	---	Pavement to be Removed

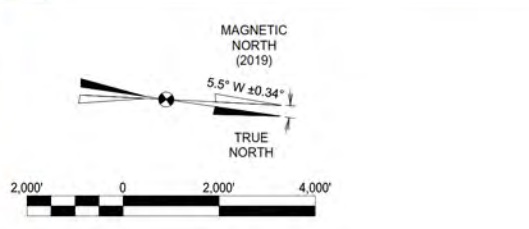
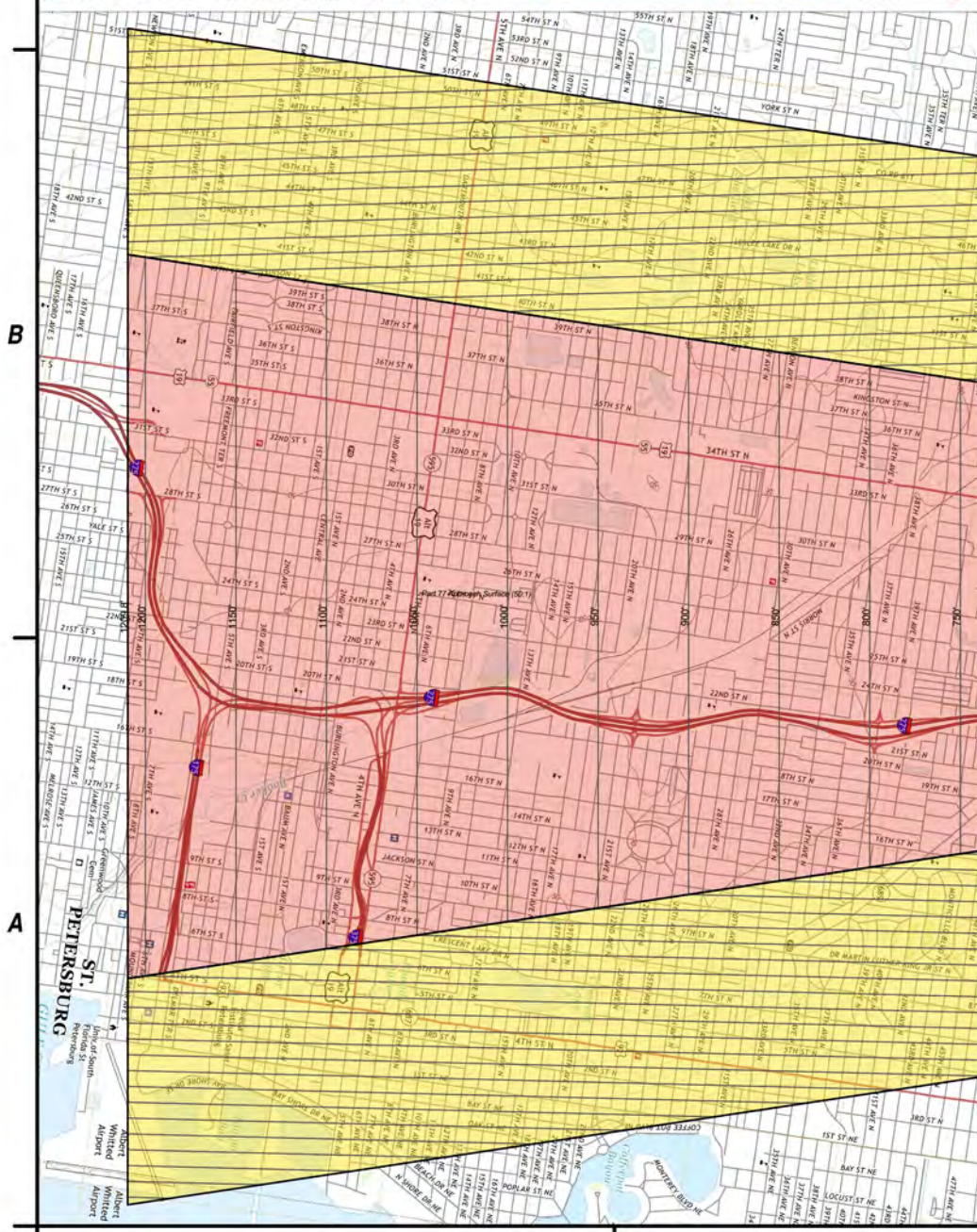
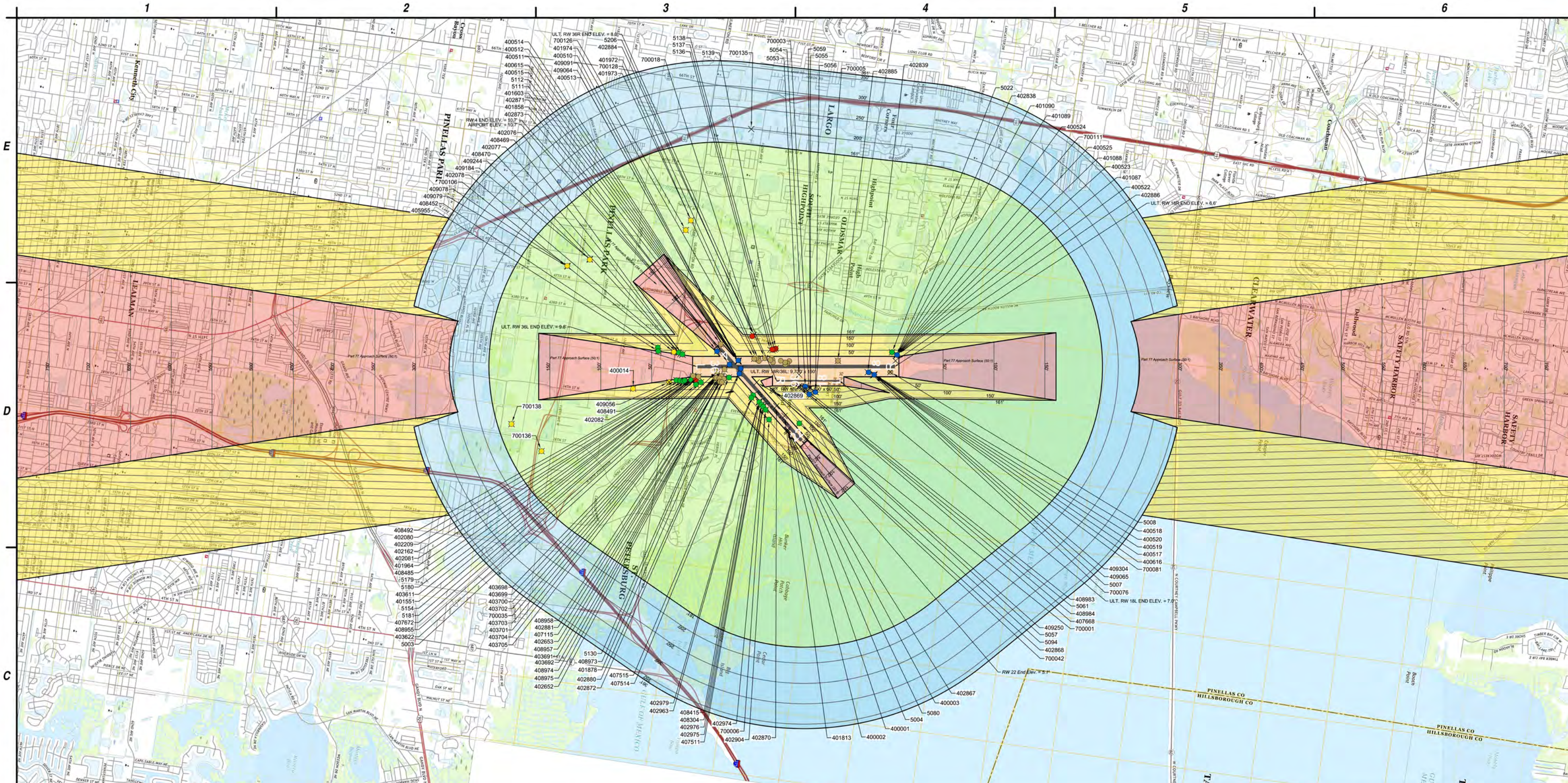
General Notes:
1. All elevations shown in height above mean sea level (NAVD 88) unless otherwise noted.
2. All coordinates in NAD 83.
3. All units are feet unless otherwise indicated.

EXISTING FACILITIES TABLE			
ID	FACILITY DESCRIPTION	TOP ELEVATION (MSL)	OBSTRUCTION MARKING/LIGHTING
1	National Aviation Academy	28.9'	None
2	Building	30.4'	None
3	Air Traffic Control Tower (ATCT)	31.8'	None
4	Airfield Electrical Vault	21.6'	None
5	Hangar	29.5'	None
6	Hangar	46.4'	None
7	Signature Hangar	48.1'	None
8	Signature Hangar	47.1'	None
9	Hangar	48.1'	None
10	Hangar	43.8'	None
11	Building	36.2'	None
12	Passenger Terminal	50.0'	None
13	Allegiant Support Facility	N/A	None
14	Pinellas County Sheriff's Office Hangar	31.8'	None
15	ARFF	33.8'	None
19	Hangar	62.2'	None
22	USCG Hangar	61.3'	None
23	USCG Facilities	33.8'	None
32	Airport Maintenance Facility	N/A	None

FUTURE FACILITIES TABLE			
ID	Facility Description	Top Elevation (MSL)	Obstruction Marking/ Lighting
1	TERMINAL ULTIMATE BUILD	37.9'	None
2	BAGGAGE SCREENING & MAKE UP	20.1'	None
3	HANGAR	41.0'	None
4	HANGAR	40.0'	None
5	HANGAR	39.5'	None
6	VEHICLE PARKING	2.4'	None
7	VEHICLE PARKING	3.1'	None
8	VEHICLE PARKING	8.0'	None
9	VEHICLE PARKING	10.0'	None
10	AIRFIELD ELECTRICAL VAULT	20.0'	None

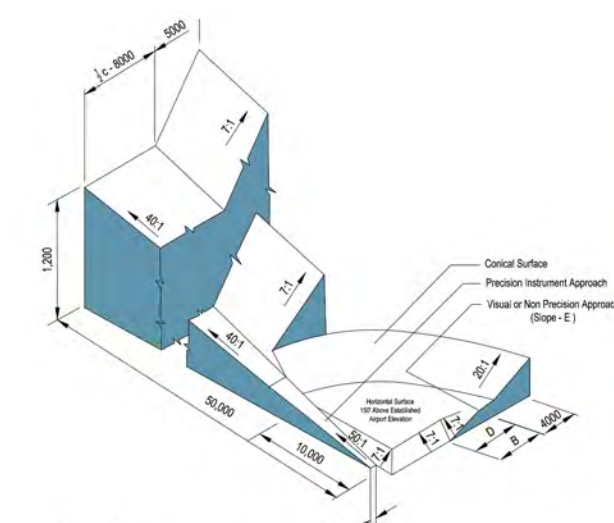


**AIRPORT LAYOUT PLAN
ST. PETE-CLEARWATER INTERNATIONAL AIRPORT
PINELLAS COUNTY
FLORIDA**



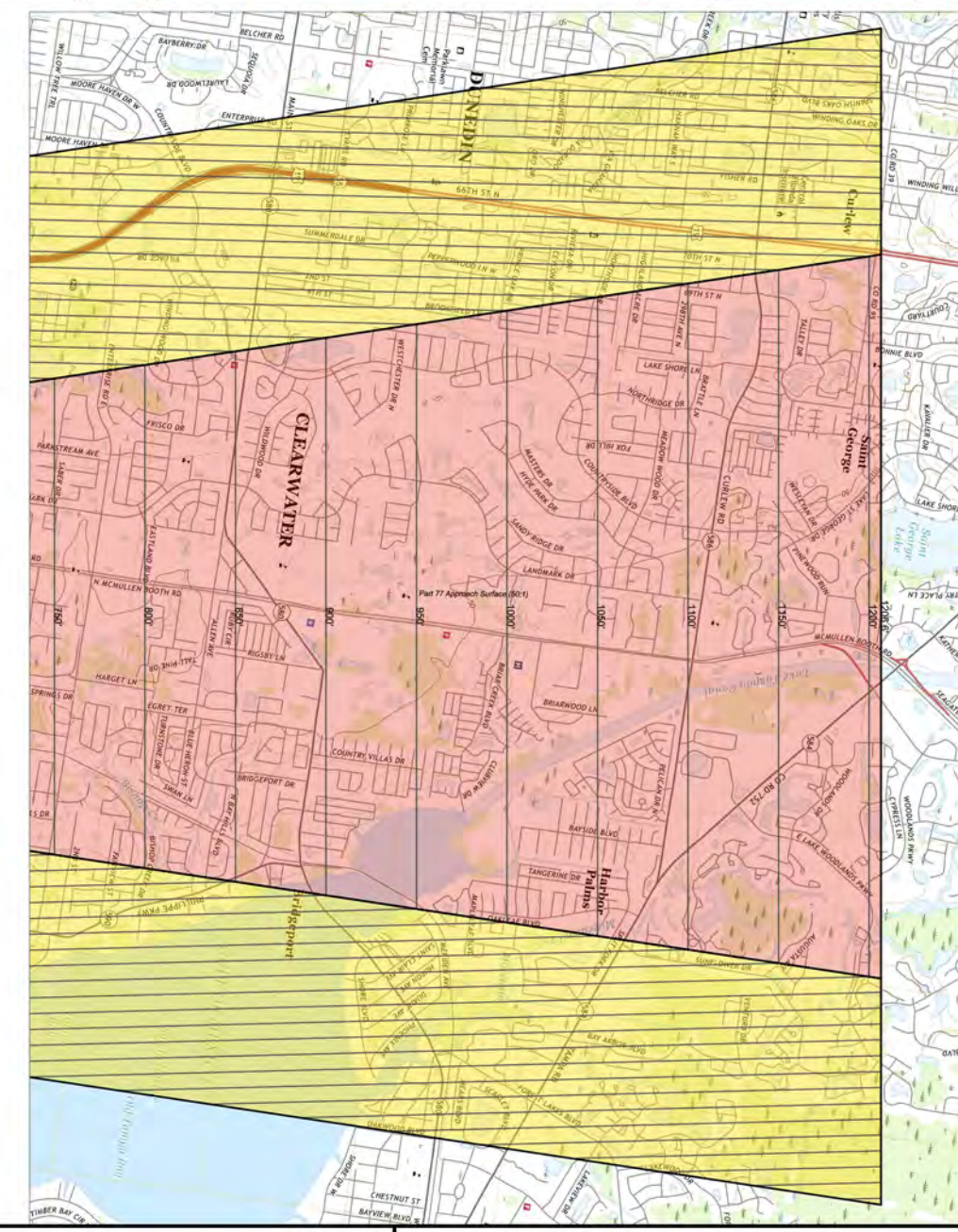
LEGEND	
EXISTING	DESCRIPTION
[Yellow]	Primary
[Orange]	Transitional
[Red]	Approach
[Light Blue]	Horizontal
[Dark Blue]	Conical
[Green]	Grounded Obstructions
[Light Green]	Trees
[Yellow Circle]	Utility Poles or Signs
[Blue Circle]	NAVAIDS
[Red Circle]	Building or Fence
[Brown Circle]	Natural High Point

Part 77 Imaginary Surfaces Isometric Section



General Notes

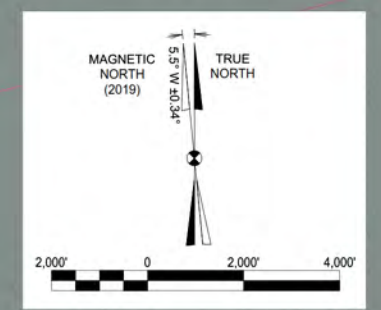
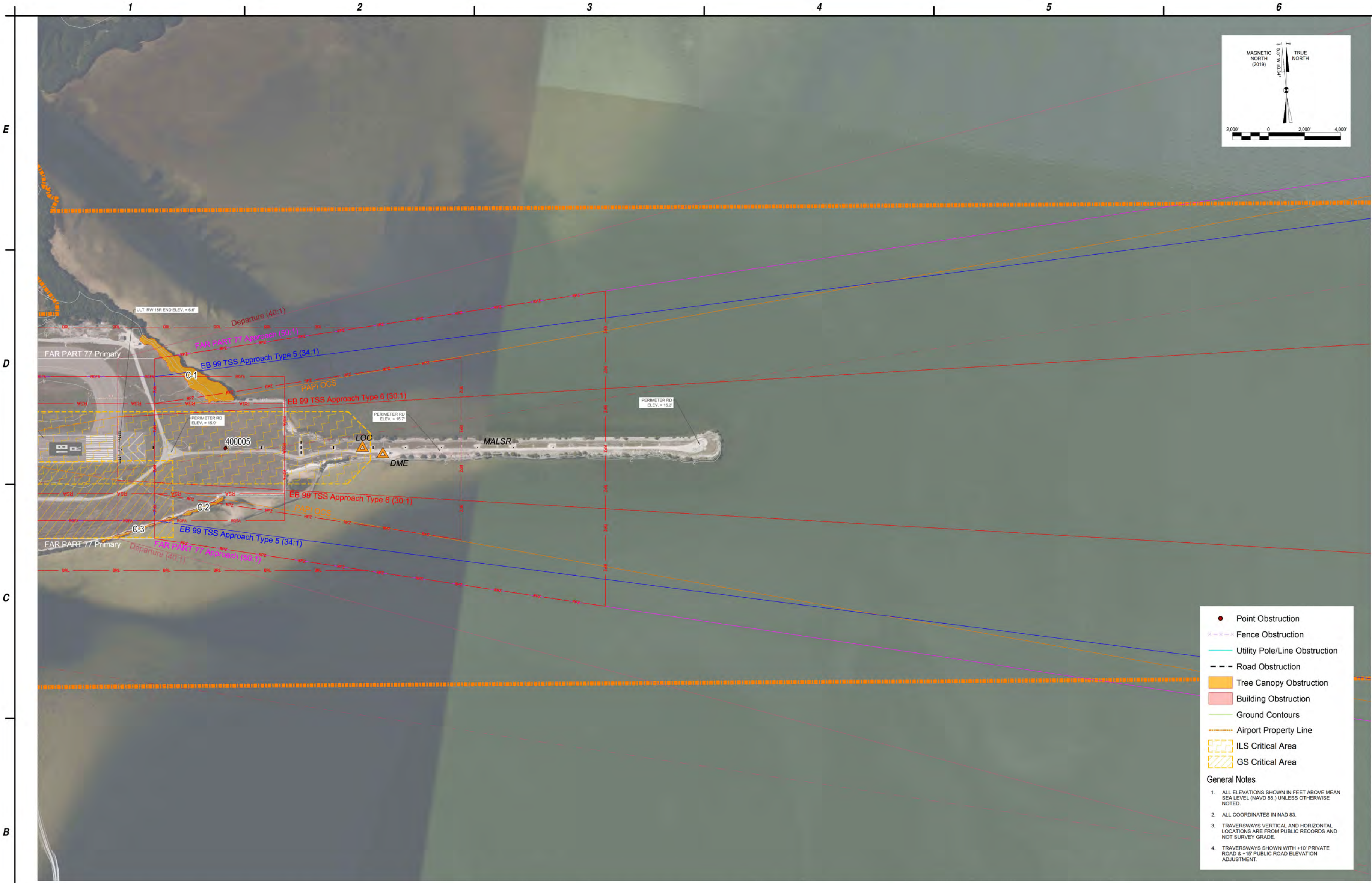
1. RUNWAY 36 END ELEVATION 8.8'
2. RUNWAY 18 END ELEVATION 6.6'
3. RUNWAY 22 END ELEVATION 5.1'
4. RUNWAY 4 END ELEVATION 10.5'
5. ALL ELEVATIONS SHOWN IN FEET ABOVE MEAN SEA LEVEL (NAVD 88).
6. ESTABLISHED AIRPORT ELEVATION IS 10.5 FEET.
7. MAPPING FOR THE OBSTRUCTION EVALUATION WAS PREPARED FROM DATA COMPILED FOR THE EXISTING AGIS SURVEY COMPLETED BY WOOLPERT INC. IN OCTOBER 2017, AND DID NOT NECESSARILY CAPTURE ALL EXISTING & PROPOSED FAR PART 77 SURFACE OBSTRUCTIONS.
8. REFER TO OBSTRUCTION DATA TABLES ON SHEETS 14 AND 15 FOR DESCRIPTION, SURFACE ELEVATION, PENETRATION, AND PROPOSED ACTION FOR EACH OBSTRUCTION.
9. REFER TO THE INNER APPROACH PLAN AND PROFILE DRAWINGS ON SHEETS 10, 11, AND 12 FOR CLOSE-IN OBSTRUCTIONS DETAILS TO EACH EXISTING AND FUTURE RUNWAY END.
10. FOR COMPATIBLE LAND USE AND DEVELOPMENT STANDARDS AROUND THE AIRPORT, REFERENCE THE CHAPTER 142 AIRPORT ZONING (EFFECTIVE JANUARY 1, 2019) OF THE PINELLAS COUNTY LAND DEVELOPMENT CODE.
11. DUE TO THE LIMITATIONS OF THE AGIS SURVEY, OBSTRUCTIONS WILL NEED TO BE VERIFIED PRIOR TO ANY OBSTRUCTION REMOVAL PROJECT.
12. NATURAL VEGETATION LOCATED WITHIN A 12.5 FEET BUFFER ZONE OF TITLE 14 CFR PART 77 SURFACES IS ALSO CONSIDERED AN OBSTRUCTION, PER FAA ENGINEERING BRIEF NO. 91, MANAGEMENT OF VEGETATION IN THE AIRPORT ENVIRONMENT.
13. FAR PART 77 IMAGINARY SURFACES ON THIS SHEET ARE FOR ST. PETE-CLEARWATER INTERNATIONAL AIRPORT. THESE SURFACES ARE BASED UPON FUTURE CONDITIONS. THE HEIGHT OF TRAVERSEWAYS IN PROFILE VIEW INCLUDES THE 15-FOOT TRAVERSEWAY ADJUSTMENT FOR PUBLIC ROADS.



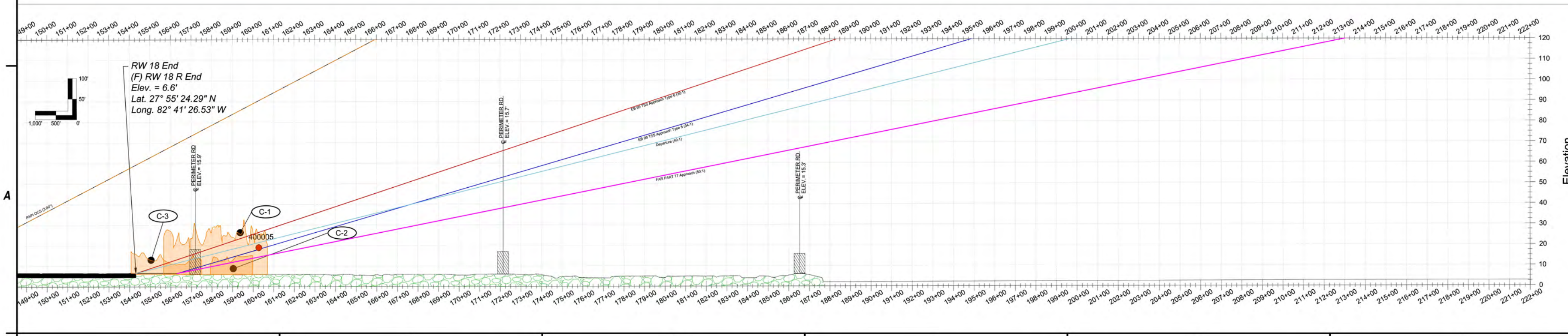
REVISIONS	
NO.	DESCRIPTION

PROJECT NO:	042 001 001
DATE:	SEPTEMBER 2020
DRAWN BY:	JJ SHURER
DESIGNED BY:	JJ SHURER
CHECKED BY:	NM ALEX

**AIRPORT AIRSPACE
DRAWING
1/3**



- Point Obstruction
 - Fence Obstruction
 - Utility Pole/Line Obstruction
 - Road Obstruction
 - Tree Canopy Obstruction
 - Building Obstruction
 - Ground Contours
 - Airport Property Line
 - ▨ ILS Critical Area
 - ▨ GS Critical Area
- General Notes**
1. ALL ELEVATIONS SHOWN IN FEET ABOVE MEAN SEA LEVEL (NAVD 83.) UNLESS OTHERWISE NOTED.
 2. ALL COORDINATES IN NAD 83.
 3. TRAVERSWAYS VERTICAL AND HORIZONTAL LOCATIONS ARE FROM PUBLIC RECORDS AND NOT SURVEY GRADE.
 4. TRAVERSWAYS SHOWN WITH +10' PRIVATE ROAD & +15' PUBLIC ROAD ELEVATION ADJUSTMENT.

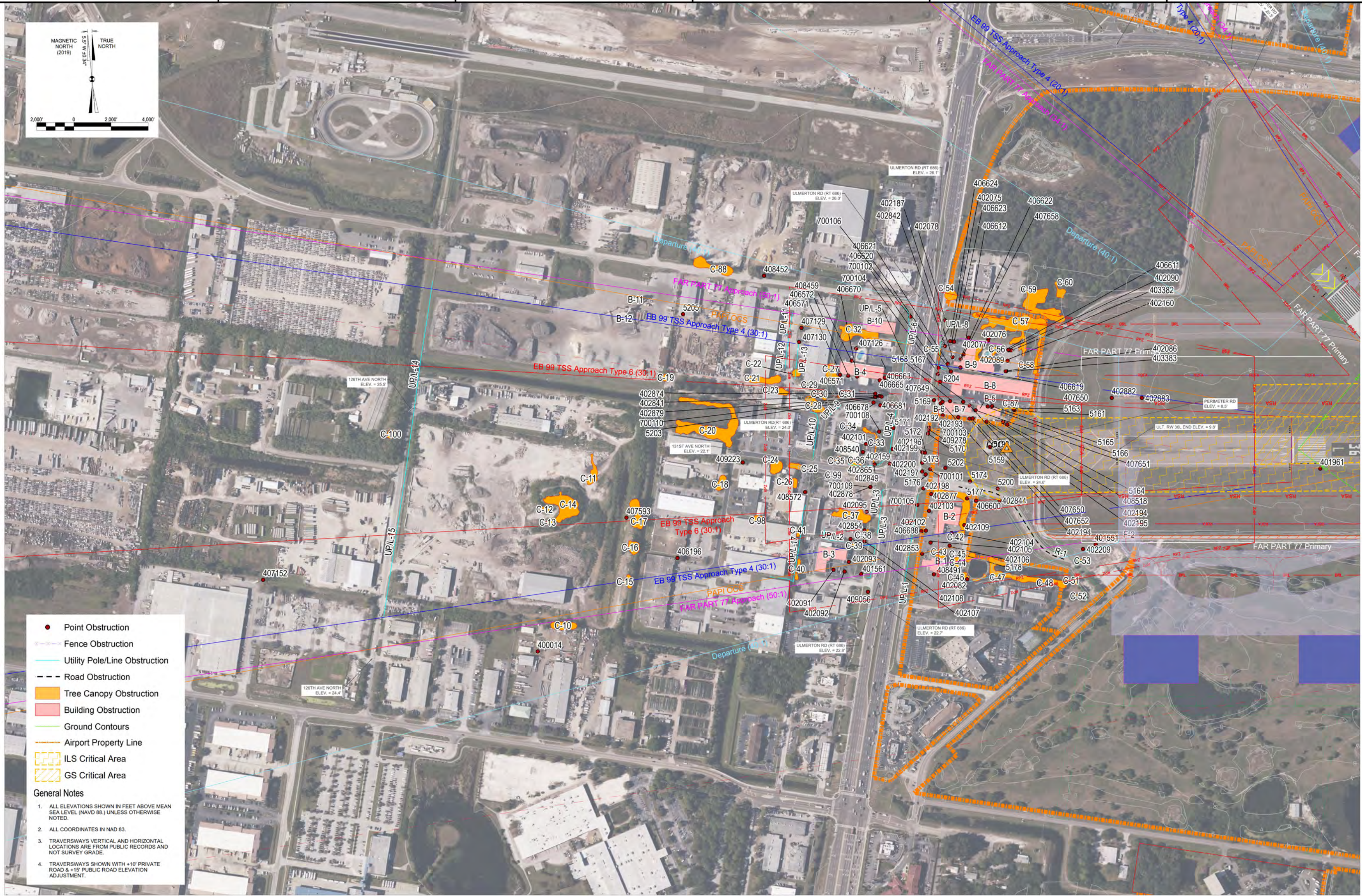


**AIRPORT LAYOUT PLAN
ST. PETE-CLEARWATER INTERNATIONAL AIRPORT
PINELLAS COUNTY
FLORIDA**

REVISIONS	NO.	DATE	DESCRIPTION

PROJECT NO: 042.001.001
DATE: SEPTEMBER 2020
DRAWN BY: G.M. BUTLER
DESIGNED BY: G.M. BUTLER
CHECKED BY: N.M. ALEX

**RUNWAY 18
INNER APPROACH:
PLAN & PROFILE**

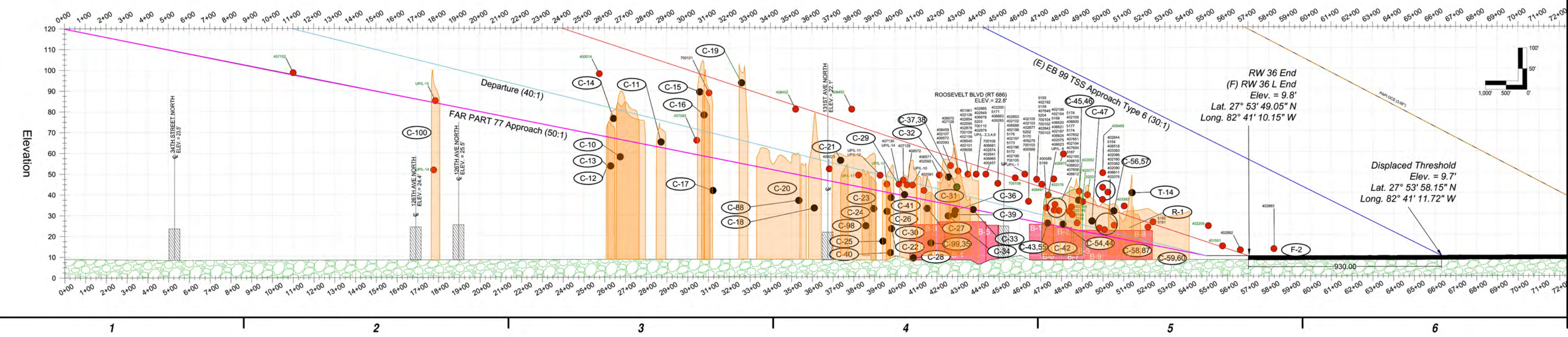


Legend:

- Point Obstruction
- Fence Obstruction
- Utility Pole/Line Obstruction
- Road Obstruction
- Tree Canopy Obstruction
- Building Obstruction
- Ground Contours
- Airport Property Line
- ILS Critical Area
- GS Critical Area

General Notes:

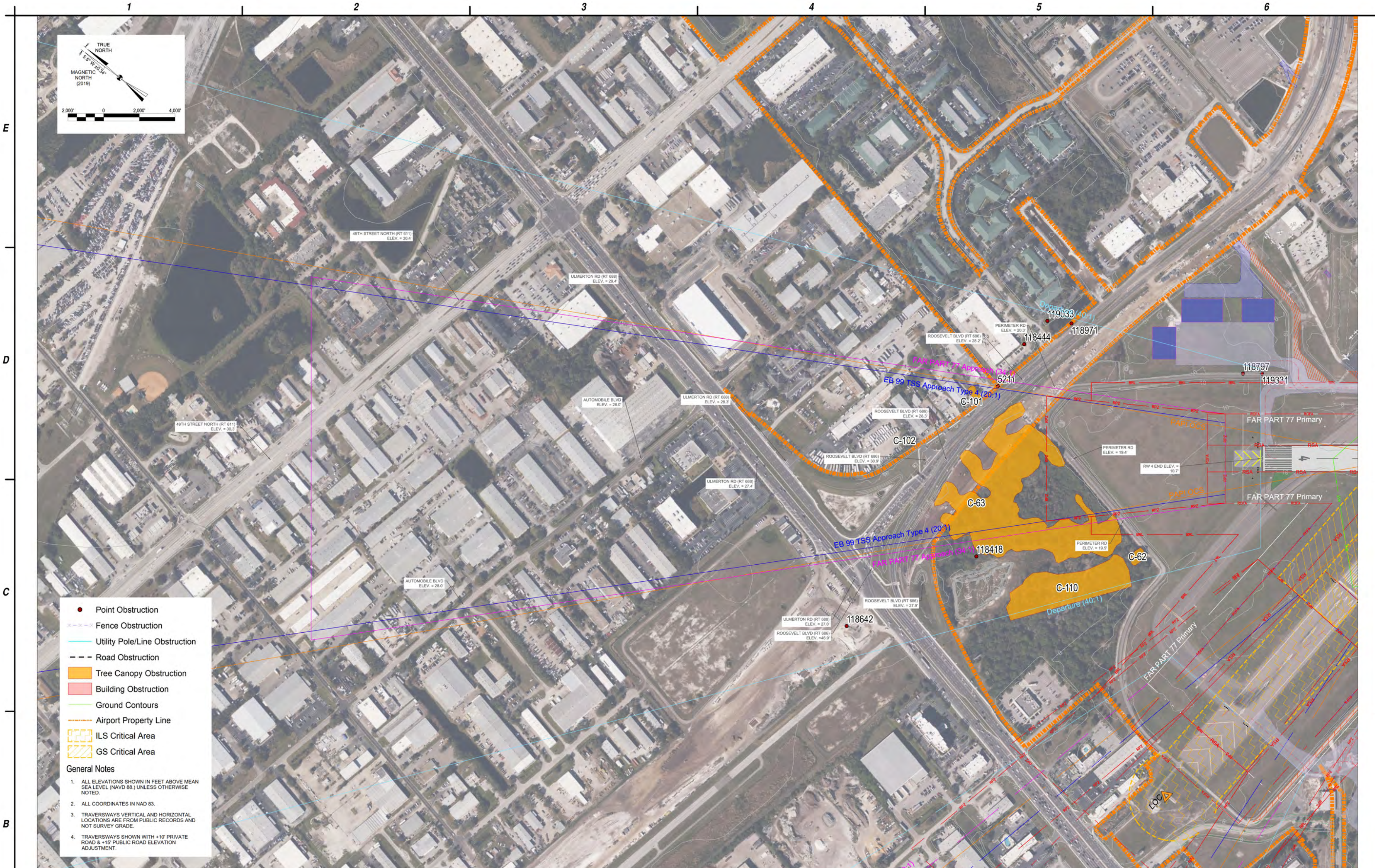
- ALL ELEVATIONS SHOWN IN FEET ABOVE MEAN SEA LEVEL (NAVD 88), UNLESS OTHERWISE NOTED.
- ALL COORDINATES IN NAD 83.
- TRAVERSWAYS VERTICAL AND HORIZONTAL LOCATIONS ARE FROM PUBLIC RECORDS AND NOT SURVEY GRADE.
- TRAVERSWAYS SHOWN WITH +10' PRIVATE ROAD & +15' PUBLIC ROAD ELEVATION ADJUSTMENT.



REV.	NO.	DATE	DESCRIPTION

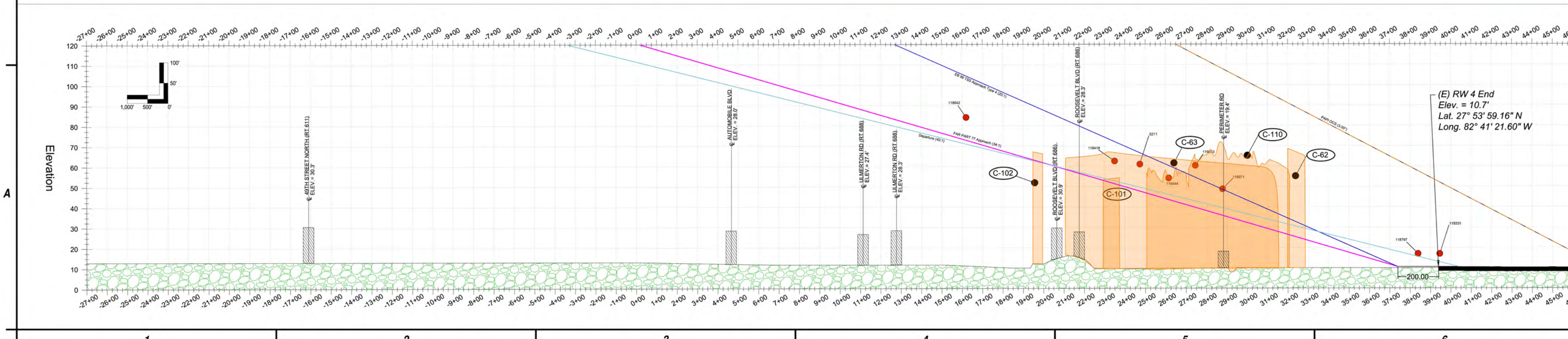
PROJECT NO: 042.001.001
DATE: SEPTEMBER 2020
DRAWN BY: G.M. BUTLER
DESIGNED BY: G.M. BUTLER
CHECKED BY: N.M. ALEX

**RUNWAY 36
INNER APPROACH:
PLAN & PROFILE**



- Point Obstruction
- ⊘ Fence Obstruction
- Utility Pole/Line Obstruction
- - - Road Obstruction
- Tree Canopy Obstruction
- Building Obstruction
- Ground Contours
- Airport Property Line
- ▤ ILS Critical Area
- ▨ GS Critical Area

- General Notes**
1. ALL ELEVATIONS SHOWN IN FEET ABOVE MEAN SEA LEVEL (NAVD 88.) UNLESS OTHERWISE NOTED.
 2. ALL COORDINATES IN NAD 83.
 3. TRAVERSWAYS VERTICAL AND HORIZONTAL LOCATIONS ARE FROM PUBLIC RECORDS AND NOT SURVEY GRADE.
 4. TRAVERSWAYS SHOWN WITH +10' PRIVATE ROAD & +15' PUBLIC ROAD ELEVATION ADJUSTMENT.

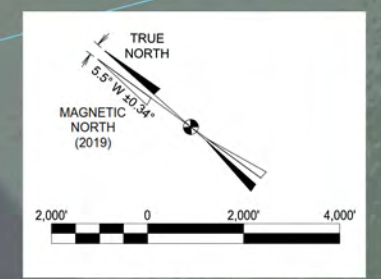
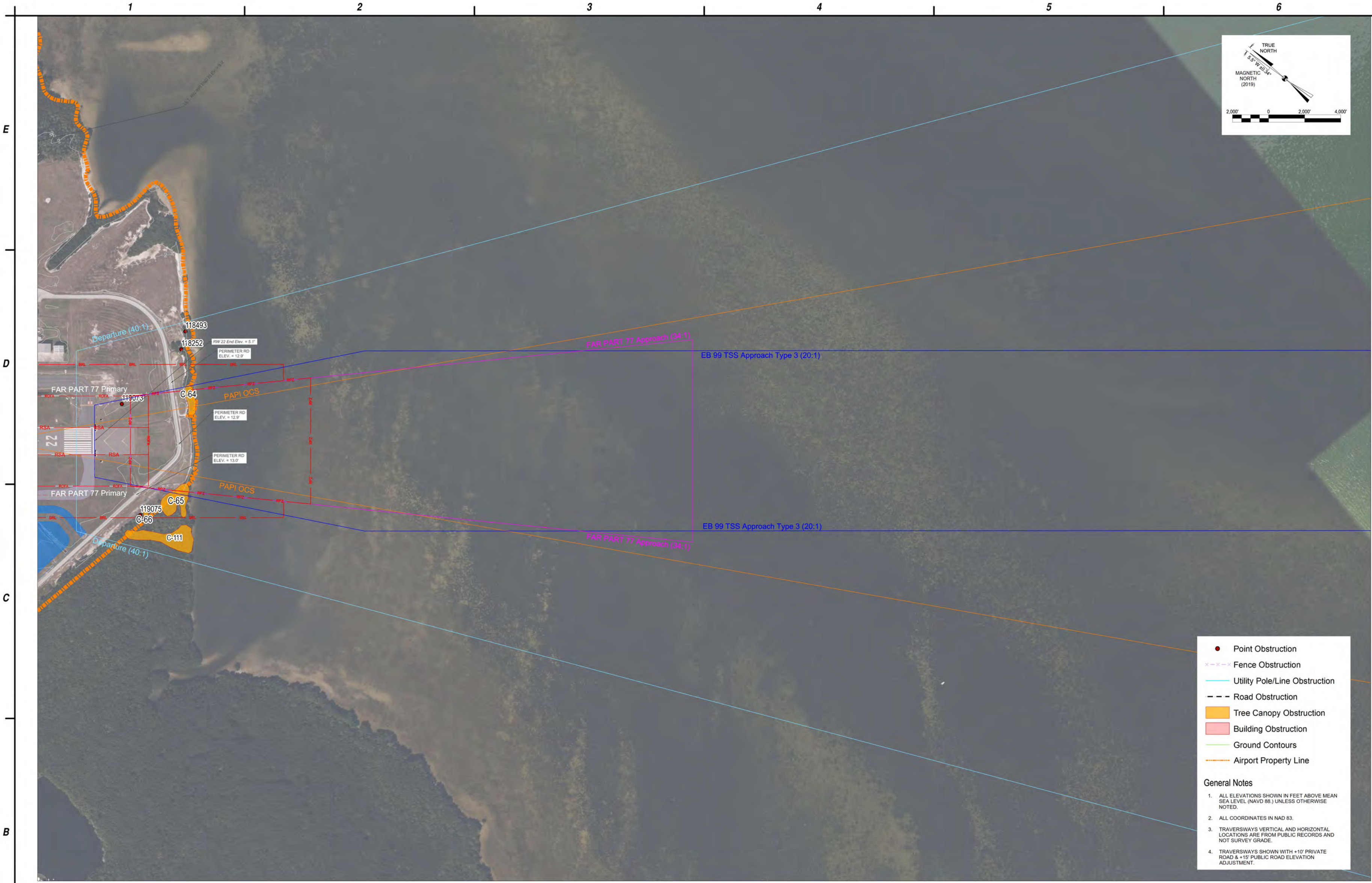


**AIRPORT LAYOUT PLAN
ST. PETE-CLEARWATER INTERNATIONAL AIRPORT
PINELLAS COUNTY
FLORIDA**

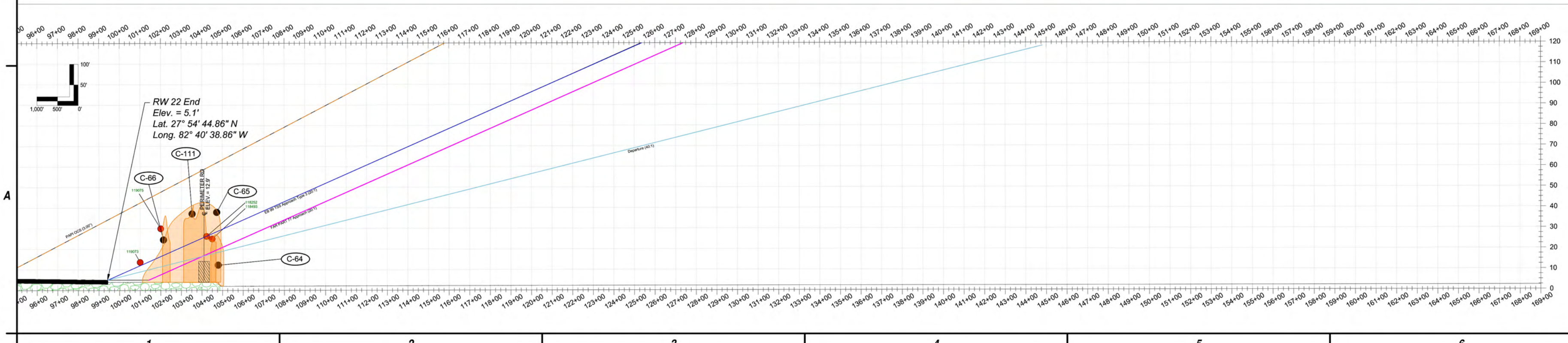
REVISIONS	NO.	DATE	DESCRIPTION

PROJECT NO: 042-001-001
 DATE: SEPTEMBER 2020
 DRAWN BY: G.M. BUTLER
 DESIGNED BY: G.M. BUTLER
 CHECKED BY: N.M. ALEX

**RUNWAY 4
INNER APPROACH:
PLAN & PROFILE**



- Point Obstruction
 - ✕ - - - Fence Obstruction
 - Utility Pole/Line Obstruction
 - - - Road Obstruction
 - Tree Canopy Obstruction
 - Building Obstruction
 - Ground Contours
 - Airport Property Line
- General Notes**
1. ALL ELEVATIONS SHOWN IN FEET ABOVE MEAN SEA LEVEL (NAVD 88.) UNLESS OTHERWISE NOTED.
 2. ALL COORDINATES IN NAD 83.
 3. TRAVERSWAYS VERTICAL AND HORIZONTAL LOCATIONS ARE FROM PUBLIC RECORDS AND NOT SURVEY GRADE.
 4. TRAVERSWAYS SHOWN WITH +10' PRIVATE ROAD & +15' PUBLIC ROAD ELEVATION ADJUSTMENT.

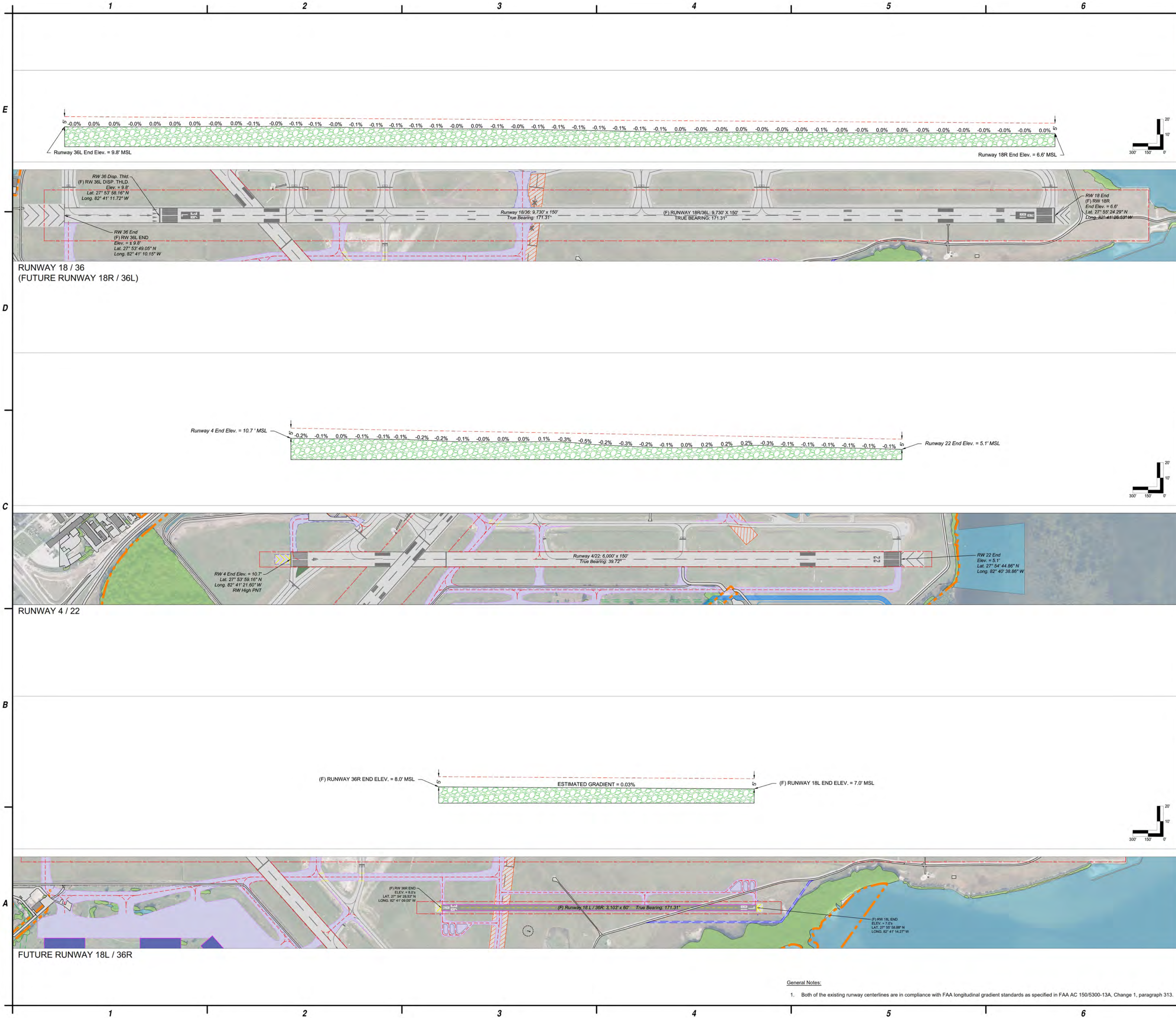


**AIRPORT LAYOUT PLAN
ST. PETE-CLEARWATER INTERNATIONAL AIRPORT
PINELLAS COUNTY
FLORIDA**

REVISIONS	NO.	DATE	DESCRIPTION

PROJECT NO: 042.001.001
 DATE: SEPTEMBER 2020
 DRAWN BY: G.M. BUTLER
 DESIGNED BY: G.M. BUTLER
 CHECKED BY: N.M. ALEX

**RUNWAY 22
INNER APPROACH:
PLAN & PROFILE**



General Notes:

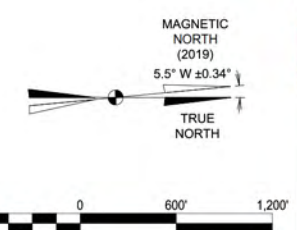
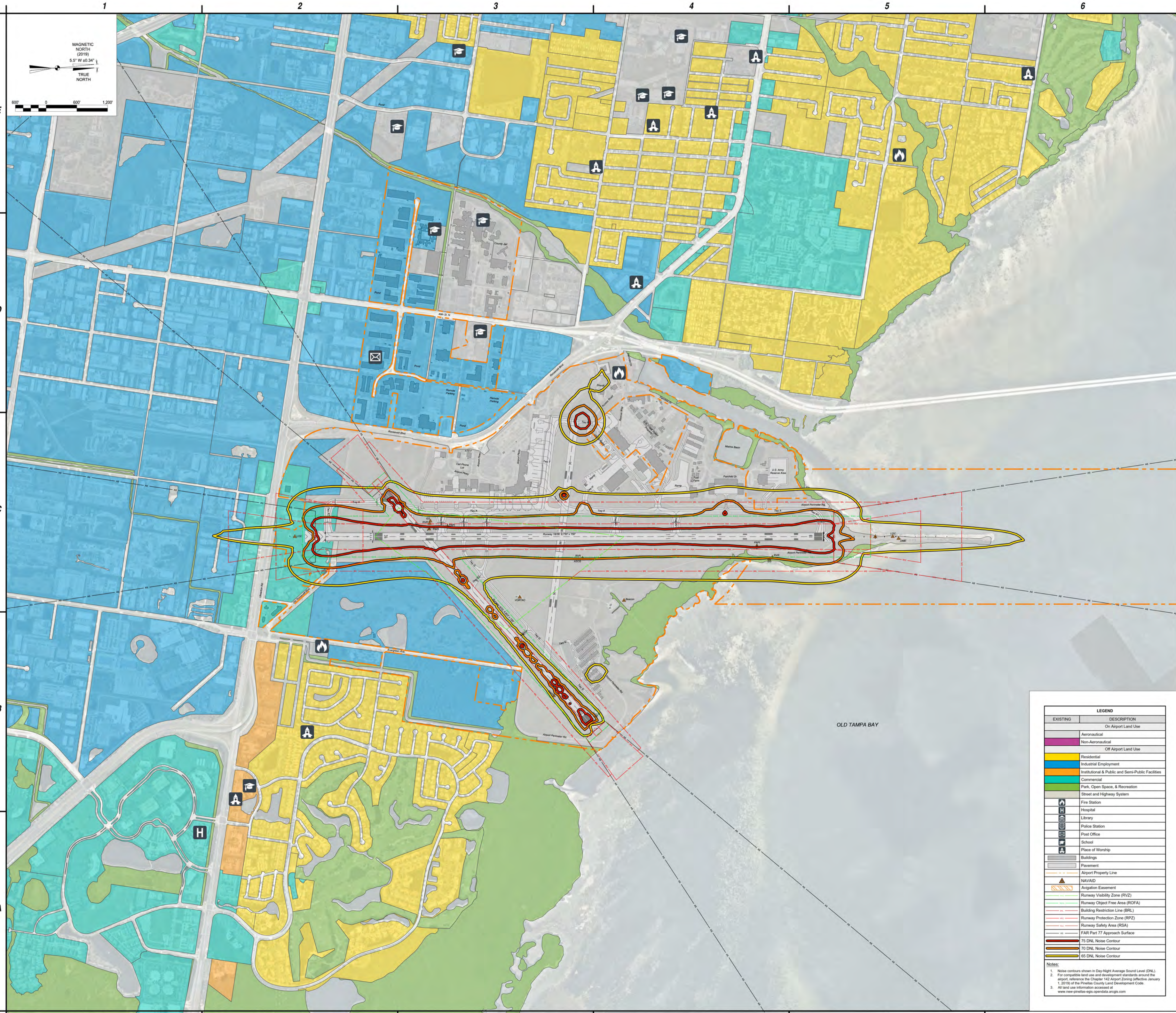
- Both of the existing runway centerlines are in compliance with FAA longitudinal gradient standards as specified in FAA AC 150/5300-13A, Change 1, paragraph 313.

REV NO. DATE DESCRIPTION
1. 17. 2020 - 10:24 AM
C:\Users\jshurer\Documents\St. Pete-Clearwater International\A-100\A-100-1001\A-100-1001-001 - 0402001001 - PLE - Runway Centerline Profiles.dwg

REV NO.	DATE	DESCRIPTION
1	17. 2020	10:24 AM

PROJECT NO.: 042.001.001
DATE: SEPTEMBER 2020
DRAWN BY: J.J. SHURER
DESIGNED BY: J.J. SHURER
CHECKED BY: NM ALEX

RUNWAY CENTERLINE PROFILES



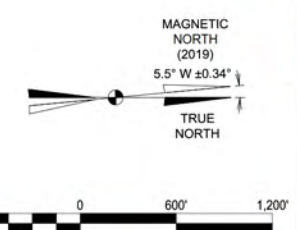
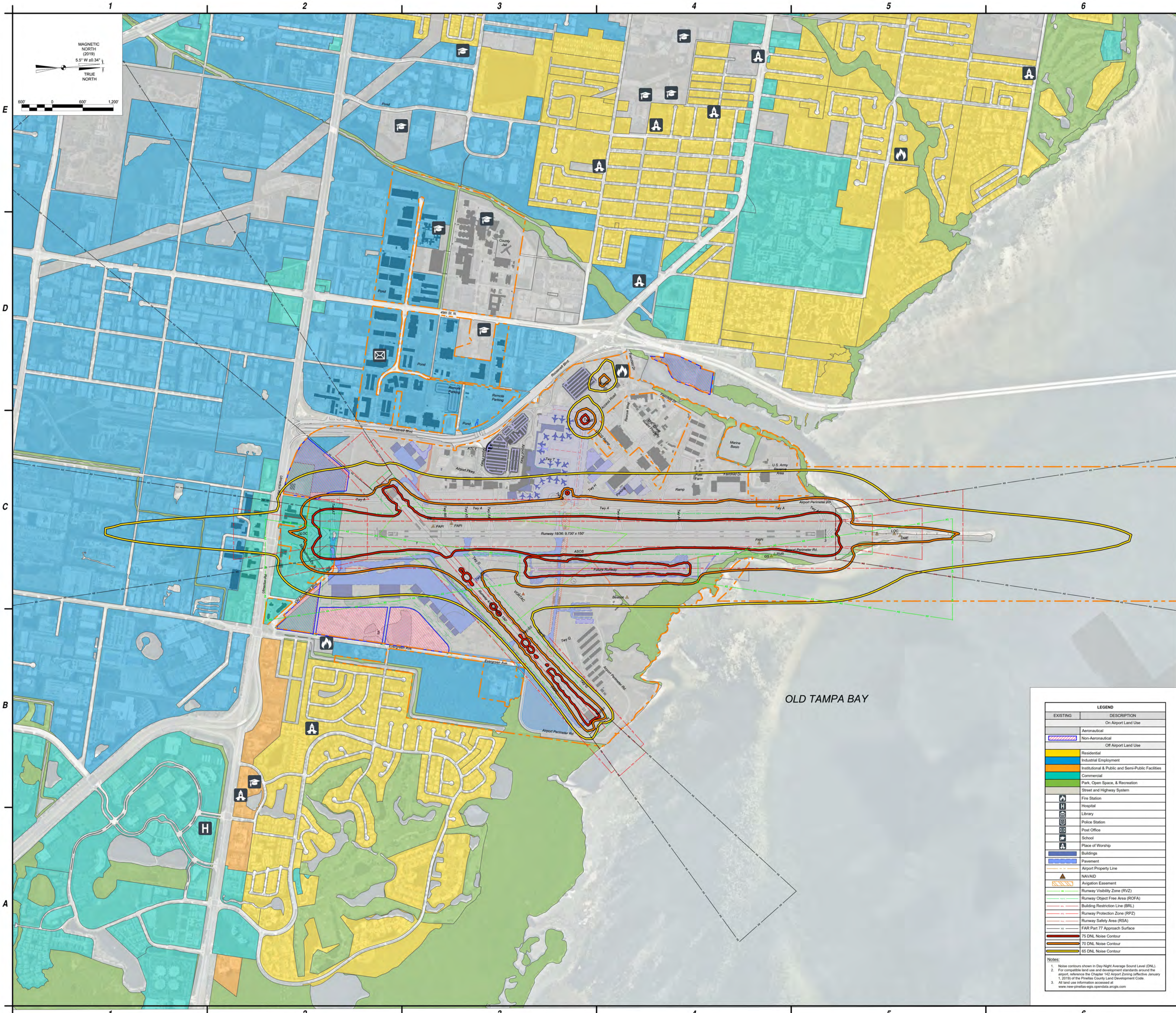
AIRPORT LAYOUT PLAN
ST. PETE-CLEARWATER INTERNATIONAL AIRPORT
PINELLAS COUNTY
FLORIDA

EXISTING	DESCRIPTION
On Airport Land Use	
	Aeromautical
	Non-Aeromautical
Off Airport Land Use	
	Residential
	Industrial Employment
	Institutional & Public and Semi-Public Facilities
	Commercial
	Park, Open Space, & Recreation
	Street and Highway System
	Fire Station
	Hospital
	Library
	Police Station
	Post Office
	School
	Place of Worship
	Buildings
	Pavement
	Airport Property Line
	NAVAID
	Aviation Easement
	Runway Visibility Zone (RVZ)
	Runway Object Free Area (ROFA)
	Building Restriction Line (BRL)
	Runway Protection Zone (RPZ)
	Runway Safety Area (RSA)
	FAR Part 77 Approach Surface
	75 DNL Noise Contour
	70 DNL Noise Contour
	65 DNL Noise Contour

NO.	DATE	DESCRIPTION

PROJECT NO: 042.001.001
 DATE: SEPTEMBER 2020
 DRAWN BY: J.J. SHURER
 DESIGNED BY: J.J. SHURER
 CHECKED BY: NM ALEX

EXISTING LAND USE & NOISE CONTOURS (2017)



AIRPORT LAYOUT PLAN
ST. PETE-CLEARWATER INTERNATIONAL AIRPORT
PINELLAS COUNTY
FLORIDA

LEGEND	
EXISTING	DESCRIPTION
On Airport Land Use	
	Aeronautical
	Non-Aeronautical
Off Airport Land Use	
	Residential
	Industrial Employment
	Institutional & Public and Semi-Public Facilities
	Commercial
	Park, Open Space, & Recreation
	Street and Highway System
	Fire Station
	Hospital
	Library
	Police Station
	Post Office
	School
	Place of Worship
	Buildings
	Pavement
	Airport Property Line
	NAVAID
	Aviation Easement
	Runway Visibility Zone (RVZ)
	Runway Object Free Area (ROFA)
	Building Restriction Line (BRL)
	Runway Protection Zone (RPZ)
	Runway Safety Area (RSA)
	FAR Part 77 Approach Surface
	75 DNL Noise Contour
	70 DNL Noise Contour
	65 DNL Noise Contour

NOTES:
 1. Noise contours shown in Day-Night Average Sound Level (DNL).
 2. For compatible land use and development standards around the airport, reference the Chapter 162 Airport Zoning Ordinance, January 1, 2019) of the Pinellas County Land Development Code.
 3. All land use information accessed at www.new.pinellas-egis.opendata.arcgis.com

REVISIONS	NO.	DATE	DESCRIPTION

PROJECT NO: 042.001.001
 DATE: SEPTEMBER 2020
 DRAWN BY: J.J. SHURER
 DESIGNED BY: J.J. SHURER
 CHECKED BY: NM ALEX

FUTURE LAND USE & NOISE CONTOURS (2023)

EXHIBIT 'A' EASEMENT TABLE							
PARCEL	GRANTOR	GRANTEE	BOOK & PAGE	DATE	CONVEYANCE INSTRUMENT	OWNERSHIP	ACREAGE
AVIGATION							
AV1	Moog, Inc. Engine Controls Division	Pinellas County	ORB 6412, PG 2051	1/26/1987	Avigation Easement	Easement	27.32 AC
DRAINAGE							
D1	J.O.Stone	Pinellas County	ORB 4619, PG 1498	11/7/1977	Drainage Easement	Easement	0.75 AC
D2	AIRCO Golf, Inc.	Pinellas Grove	ORB 6710, PG 2182	3/30/1988	Drainage Easement	Easement	1.14 AC
D3	Moog, Inc.	Pinellas County	ORB 6818, PG 771	8/23/1988	Drainage Easement	Easement	4.06 AC
D4	Pinellas County	Evergreen Avenue N.V.	ORB 6925, PG 1311	1/27/1989	Drainage Easement	Easement	0.01 AC
D5	Crosstank Partners Inc. (Formerly FSU Trent, L.M.)	Pinellas County	ORB 13368, PG 2314	2/10/2004	Drainage Easement	Easement	0.05 AC
D6	James & Julia McDaniell, Elmer & Lois Gramm, N & Margaret Kirkland, Forest & Willadene Dean	Jack Smith	PB 88, PG 79	5/7/1957	Drainage Easement	Easement	7.5 AC
D7	Hudson & Sons, Inc.	Elizabeth H. Hudson	PB 80, PG 65	4/22/1957	Drainage Easement	Easement	0.11 AC
DR1	Pinellas County	Pinellas County	ORB 7747, PG 2020	12/3/1991	Drainage Easement	Easement	1.27 AC
D8	Eve-Tone	Pinellas County	PB 122, PG 89	5/3/2001	Drainage Easement	Easement	0.03 AC
D9	Pinellas County	Florida Department of Transportation	ORB 19436, PG 1892	12/6/2016	Drainage Easement	Easement	4.29 AC
DRAINAGE AND ENVIRONMENTAL PRESERVE							
DE1	James & Julia McDaniell, Elmer & Lois Gramm, N & Margaret Kirkland, Forest & Willadene Dean	Jack Smith	PB 88, PG 79	5/7/1957	Drainage and Environmental Preserve	Easement	7.5 AC
DRAINAGE AND UTILITY							
DU1	Pinellas Groves	Pinellas County	PB 80, PG 22	6/19/1979	Drainage and Utility Easement	Easement	1.90 AC
DU2	Pinellas County	Pinellas County	PB 82, PG 50	10/7/1980	Drainage and Utility Easement	Easement	1.56 AC
DU3	Pinellas County	Pinellas County	PB 84, PG 62	1/13/1982	Drainage and Utility Easement	Easement	0.53 AC
GENERAL UTILITY							
GU1	Pinellas County	United States Coast Guard	ORB 4454, PG 369	8/31/1976	General Utility Easement/Perpetual Easement for Aircraft Parking and Taxiway	Easement	0.36 AC
GU2	Pinellas County	Pinellas County	PB 82, PG 50	10/7/1980	General Utility Easement	Easement	1.07 AC
GU3	Pinellas County	Pinellas County	PB 84, PG 62	1/13/1982	General Utility Easement	Easement	0.65 AC
GU4	Pinellas County	Pinellas County	PB 19, PG 37	8/13/1926	General Utility Easement	Easement	0.31 AC
GU5	AHI Hotel Associates, AIRCO Golf, Inc., & St. Petersburg/Clearwater Airport Hotel Associates, LTD.	AHI Hotel Associates, AIRCO Golf, Inc., & St. Petersburg/Clearwater Airport Hotel Associates, LTD.	DB 7401, PG 1072	10/12/1990	General Utility Easement	Easement	0.46 AC
GU6	Bay Port	Pinellas County	PB 16, PG 9	3/2/1926	General Utility Easement	Easement	0.55 AC
GU7	William & Leada Wagnann	Jack Smith	PB 17, PG 54	1/20/1957	General Utility Easement	Easement	1.03 AC
INGRESS / EGRESS							
IE1	Coin Acceptors, Inc.	Neighborly Sewer Services, Inc.	ORB 6136, PG 423	12/19/1985	Ingress/Egress Easement	Easement	0.21 AC
IE2	Surplus Building Associates	Surplus Building Associates	ORB 7348 PG 488	8/7/1990	Ingress/Egress Easement	Easement	0.14 AC
IE3	Pinellas County	Engelhardt Oilfield Partnership	ORB 8055, PG 4	11/15/2009	Ingress/Egress Easement	Easement	3.54 AC
IE4	Stokyard 140 Condominium	Pinellas County	Condominium Book 159, PG 71	7/13/2016	Ingress/Egress Easement	Easement	0.39 AC
IE5	Crosstank Partners Inc. (Formerly FSU Trent, L.M.)	Pinellas County	ORB 13368, PG 2314	2/10/2004	Ingress/Egress Easement	Easement	0.03 AC
IE6	United States Coast Guard	Pinellas County	ORB 4454, PG 372	10/9/1976	Ingress/Egress Easement	Easement	0.659 AC
IE7	Pinellas County	Pinellas County	PB 84, PG 62	1/13/1982	Ingress/Egress Easement	Easement	1.03 AC
IE8	James T. Paul	AL Estes Bonding Agency, Inc.	ORB 8676, PG 380	12/7/1994	Perpetual Ingress/Egress/Utilities	Easement	0.22 AC
IE9	Pinellas County	Parkway Place	PB112, PG 69	4/16/1995	Ingress/Egress Easement	Easement	0.13 AC
MITIGATION							
MIT1	Pinellas County	Florida Department of Environmental Protection	ORB 9646, PG 393	9/22/1997	Perpetual Mitigation Easement	Covenant Running w/Land	3.31 AC
PERPETUAL							
PE1	State of Florida	Florida Department of Transportation	ORB 19436, PG 1892	12/6/2016	Perpetual Easement	Easement	1.47 AC
PE2	State of Florida	Florida Department of Transportation	ORB 19436, PG 1898	12/6/2016	Perpetual Easement	Easement	4.29 AC
POWER							
P1	Pinellas County	Florida Power Corp.	ORB 628, PG 638	5/9/1959	Power Easement	Easement	20.94 AC
P4	Pinellas County	Florida Power Corp.	ORB 2574, PG 428	3/29/1967	Power Easement	Easement	3.91 AC
P5	Pinellas County	Florida Power Corp.	ORB 2574, PG 431	3/29/1967	Power Easement	Easement	0.02 AC
P7	Pinellas County	Florida Power Corp.	ORB 3675, PG 93	12/3/1971	Power Easement	Easement	1.37 AC
P8	Pinellas County	Florida Power Corp.	ORB 3737, PG 114	3/6/1972	Power Easement	Easement	0.04 AC
P9	Pinellas County	Florida Power Corp.	ORB 3868, PG 108	8/31/1972	Power Easement	Easement	0.14 AC
P10	Pinellas County Board of County Commissioners	Florida Power Corp.	ORB 4630, PG 1093	12/6/1977	Power Easement	Easement	23.58 AC
P11	Pinellas County	Florida Power Corp.	ORB 4693, PG 329	5/9/1978	Power Easement	Easement	0.48 AC
P12	Smiths Industries, Inc.	Florida Power Corp.	ORB 4693, PG 332	5/9/1978	Power Easement	Easement	10.40 AC
P13	Pinellas County	Florida Power Corp.	ORB 4741, PG 1447	8/28/1978	Power Easement	Easement	0.92 AC
P14	AIRCO Golf Course, Inc.	Florida Power Corp.	ORB 4764, PG 1851	10/19/1978	Power Easement	Easement	3.00 AC
P15	Pinellas County	Florida Power Corp.	ORB 4932, PG 1049	10/24/1979	Power Easement	Distribution Easement	18.52 AC
P17	Coin Acceptors, Inc.	Florida Power Corp.	ORB 4952, PG 2077	12/6/1979	Power Easement	Distribution Easement	14.67 AC
P18	Specialty Restaurants Corp.	Florida Power Corp.	ORB 4952, PG 2099	12/6/1979	Power Easement	Distribution Easement	46.83 AC
P19	Pinellas County	Florida Power Corp.	ORB 5096, PG 1091	10/24/1980	Power Easement	Distribution Easement	77.50 AC
P20	Specialty Restaurants Corp.	Florida Power Corp.	ORB 5479, PG 613	2/23/1983	Power Easement	Distribution Easement	10.21 AC
P21	Pinellas County	Florida Power Corp.	ORB 5701, PG 76	2/16/1984	Power Easement	Distribution Easement	4.76 AC
P22	AIRCO	Florida Power Corp.	ORB 6504, PG 1418	5/29/1987	Power Easement	Distribution Easement	0.03 AC
P23	MOOG Inc.	Florida Power Corp.	ORB 6647, PG 60	12/21/1987	Power Easement	Distribution Easement	25.26 AC
P24	Pinellas County	Florida Power Corp.	ORB 7116, PG 1590	10/25/1989	Power Easement	Distribution Easement	3.34 AC
P25	Pinellas County	Florida Power Corp.	ORB 8680, PG 1347	1/14/1992	Power Easement	Distribution Easement	2.11 AC
P26	Hallmark Development of FLA, Inc.	Florida Power Corp.	ORB 8636, PG 1295	4/13/1994	Power Easement	Distribution Easement	4.23 AC
P27	Pinellas County	Florida Power Corp.	ORB 8636, PG 1004	4/13/1994	Power Easement	Distribution Easement	0.17 AC
P28	Hallmark Development of FLA, Inc.	Florida Power Corp.	ORB 8666, PG 1269	5/17/1994	Power Easement	Distribution Easement	3.25 AC
P29	Hallmark Development of FLA, Inc.	Florida Power Corp.	ORB 9180, PG 502	12/1/1995	Power Easement	Distribution Easement	2.32 AC
P30	Pinellas County	Florida Power Corp.	ORB 9398, PG 511	5/27/1996	Power Easement	Distribution Easement	0.78 AC
P31	Pinellas County	Florida Power Corp.	ORB 10983, PG 1638	7/19/2000	Power Easement	Distribution Easement	0.03 AC
P32	Cracker Barrel Old Country Store, Inc.	Progress Energy	ORB 14081, PG 1149	1/25/2005	Power Easement	Easement	2.63 AC
P33	Zeus Properties One, Inc.	Progress Energy	ORB 14385, PG 124	6/16/2005	Power Easement	Easement	2.16 AC
P34	Sunbelt Hotels - Florida II, LLC.	Progress Energy	ORB 14451, PG 2539	7/14/2005	Power Easement	Easement	1.49 AC
P35	Hallmark Development of FLA, Inc.	Progress Energy	ORB 14733, PG 110	11/9/2005	Power Easement	Easement	2.72 AC
P36	Pinellas County	Duke Energy	ORB 19423, PG 2288	11/23/2016	Power Easement	Easement	3.61 AC
P37	Pinellas County	Duke Energy	ORB 19614, PG 1578	5/3/2017	Power Easement	Easement	104.06 AC
P38	Pinellas County	Duke Energy	ORB 19929, PG 1308	2/20/2018	Power Easement	Easement	1,900.82 AC
P39	Hallmark Development of FLA, Inc.	Florida Power Corp.	ORB 9116, PG 700	9/26/1995	Power Easement	Distribution Easement	3.70 AC
P42*	Pinellas County	Pinellas County	ORB 1341, PG 191	1/17/1962	Power Easement	Easement	
P46	Pinellas County	Florida Power Corp.	ORB 6784, PG 1157	4/13/1988	Power Easement	Distribution Easement	5.01 AC
SANITARY SEWER							
S1	Pinellas County	City of Largo	ORB 6560, PG 1990	8/13/1987	Sanitary Sewer Easement	Easement	0.12 AC
S2	MOOG Inc.	Evergreen Avenue N.V.	ORB 6602, PG 143	8/1/1988	Sanitary Sewer Easement	Easement	0.22 AC
S3	Sea Wake, Inc.	City of Largo	ORB 8418, PG 1108	9/29/1993	Sanitary Sewer Easement	Easement	7.31 AC
S4	Pinellas County	City of Largo	ORB 19331, PG 197	9/7/2016	Sanitary Sewer Easement	Easement	0.35 AC
S5	AHI Hotel Associates, AIRCO Golf, Inc., & St. Petersburg/Clearwater Airport Hotel Associates, LTD.	AHI Hotel Associates, AIRCO Golf, Inc., & St. Petersburg/Clearwater Airport Hotel Associates, LTD.	ORB 7401, PG 1072	10/12/1990	Sanitary Sewer Easement	Easement	0.43 AC
S6	James & Julia McDaniell, Elmer & Lois Gramm, N & Margaret Kirkland, Forest & Willadene Dean	Jack Smith	PB 88, PG 79	5/7/1957	Sanitary Sewer Easement	Easement	7.5 AC
SANITARY SEWER AND/OR WATER							
SW1	Pinellas County	City of Largo	ORB 4302, PG 446	6/24/1975	Sewer & Water Easement	Easement	0.06 AC
SW1-A	City of Largo	Pinellas County	ORB 15073, PG 1825	4/21/2006	Sewer & Water Easement	Easement	2.76 AC
SW3	Richard E. Fedash Sr.	City of Largo	ORB 4718, PG 1332	7/5/1978	Sewer & Water Easement	Easement	0.06 AC
SW4	Pinellas County	City of Largo	ORB 4771, PG 1704	11/3/1978	Sewer & Water Easement	Easement	1.4 AC
TELEPHONE							
TEL1	Pinellas County	GTE Florida Inc.	ORB 7852, PG 663	3/24/1992	Telephone Easement	Distribution Easement	0.01 AC
TEL2	Pinellas County	GTE Florida Inc.	ORB 9702, PG 1990	5/9/1997	Telephone Easement	Distribution Easement	0.05 AC

DEFINITIONS

CD = County Deed
D = Deed
DB = Deed Book
FSD = Fee Simple Deed
ORB = Official Record Book
PB = Plat Book
QCD = Quit Claim Deed
SPWD = Special Warranty Deed
STWD = Statutory Warranty Deed
WD = Warranty Deed

LEGEND

---RPZ--- Runway Protection Zone
---RORFA--- Runway Object Free Areas
---RSA--- Runway Safety Areas
---PIE--- PIE Airport Property Line
---ZZZZ--- Easement Parcels

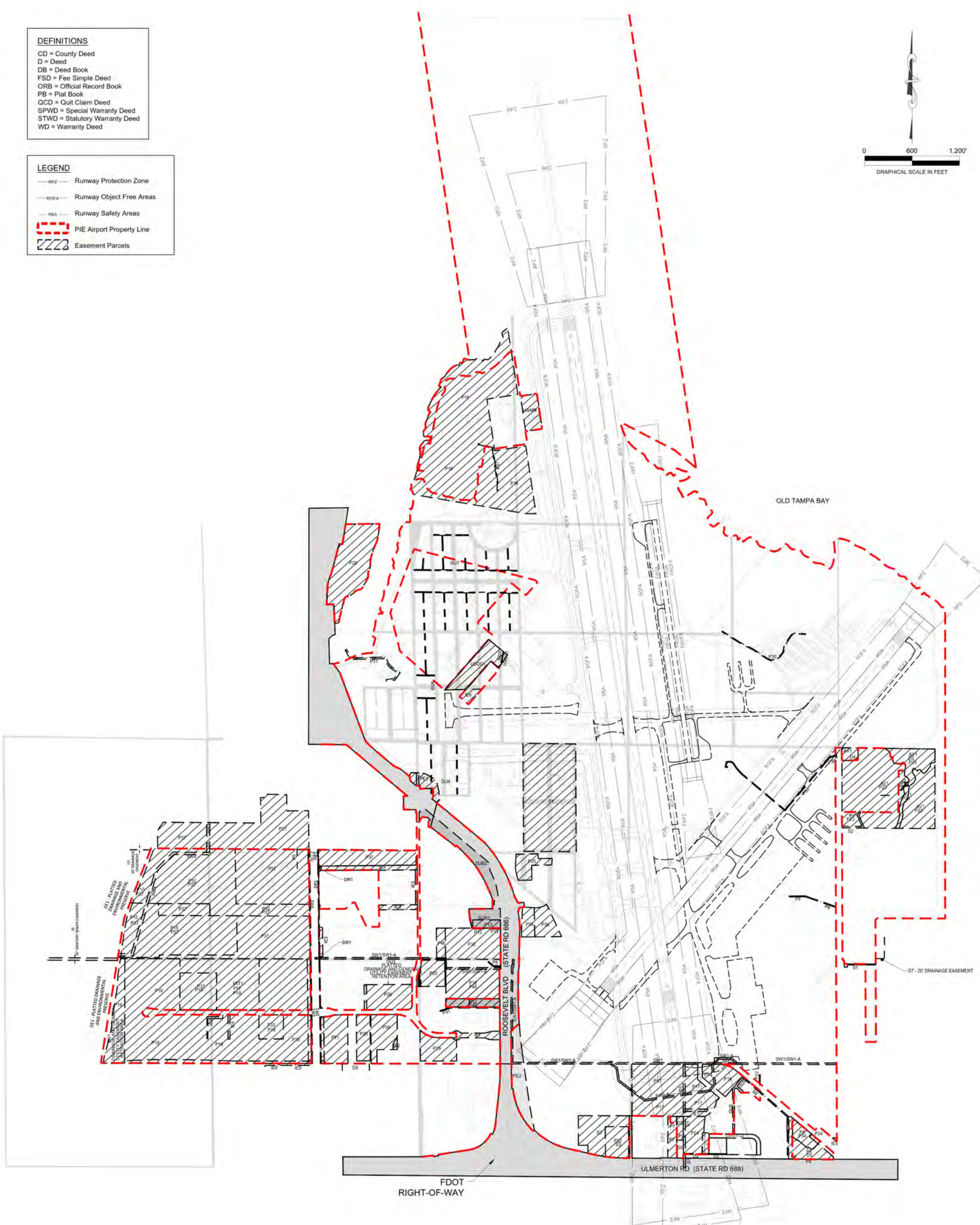
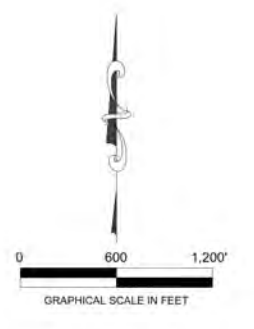


EXHIBIT 'A' EASEMENT TABLE (CONT.)							
PARCEL	GRANTOR	GRANTEE	BOOK & PAGE	DATE	CONVEYANCE INSTRUMENT	OWNERSHIP	ACREAGE
USAR1	United States of America/United States Army Reserve	Pinellas County	ORB 11983, PG 930	3/3/2002	Army Reserve Aircraft Taxiway Easement	Easement	2.19 AC
USG01	United States of America/United States Coast Guard	Pinellas County	ORB 4454, PG 369	9/10/1976	Coast Guard Aircraft Parking & Taxiway Easement	Easement	4.03 AC

* Easement not mapped as monument no longer exists.



AIRPORT LAYOUT PLAN
ST. PETE-CLEARWATER INTERNATIONAL AIRPORT
PINELLAS COUNTY
FLORIDA

REVISIONS	NO.	DATE	DESCRIPTION
PROJECT NO:	042.001.001	DATE:	SEPTEMBER 2020
DRAWN BY:	RRC	DESIGNED BY:	
CHECKED BY:			

EXHIBIT A - AIRPORT PROPERTY INVENTORY MAP: 4/4