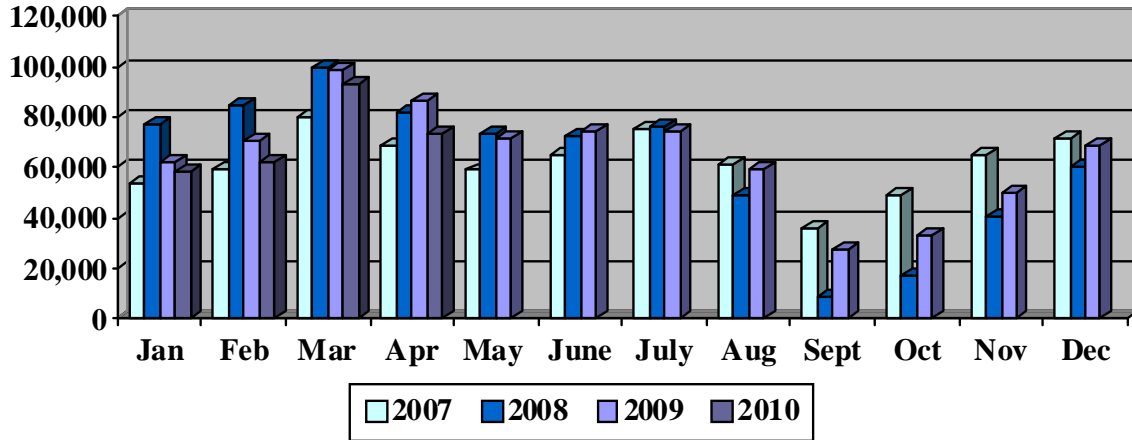


# St. Petersburg-Clearwater International Airport

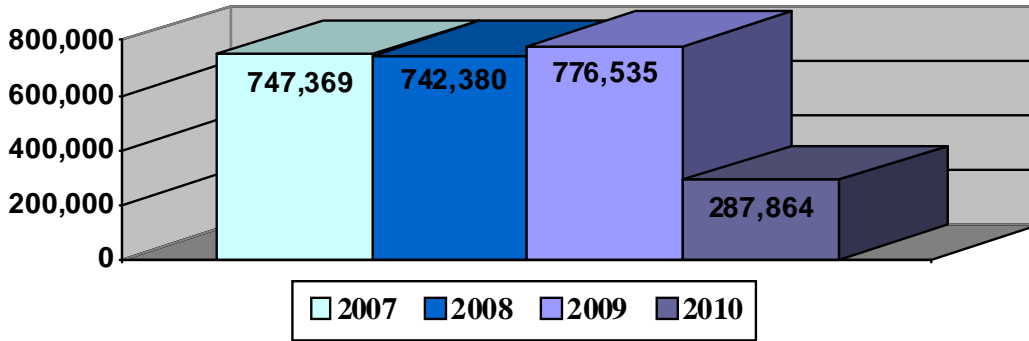
## Passenger Report for April 2010

- Domestic & International Passenger Traffic for the month of April was down 15%. Domestic Traffic was 70,455, down 15%. International Traffic was 3,113, down 21%. Total Passenger Traffic is down 10% year-to-date vs. 2009.

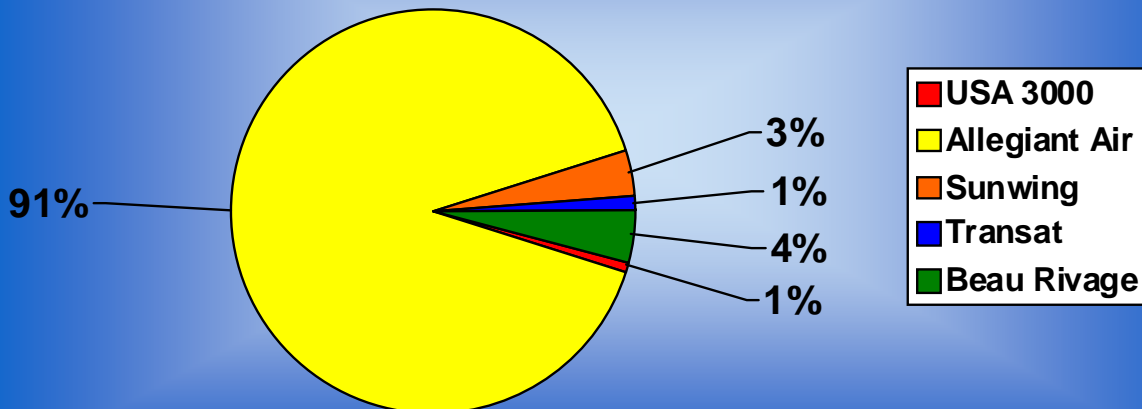
**Summary of Passenger Traffic**



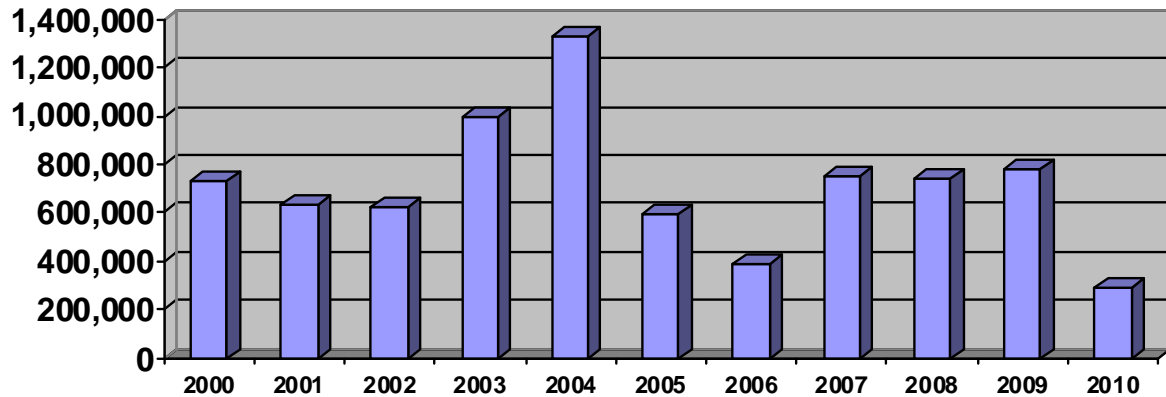
**Year to Date Passenger Traffic - April 2010**  
2007, 2008, & 2009 Year Totals



**Percentage of Passenger Traffic by Airline**  
Year to Date 2010



## Total Passengers 2000 - 2010



Current non-stop service in/out of St. Petersburg-Clearwater International Airport:

### Domestic Flights

#### Allegiant Air

Allentown, PA  
Bangor, ME  
Cedar Rapids, IA  
Chattanooga, TN  
Des Moines, IA  
Ft. Wayne, IN  
Huntington, WV  
Grand Rapids, MI  
Greensboro, NC  
Greenville-Spartanburg, SC  
Knoxville, TN  
Lexington, KY  
Peoria, IL  
Plattsburgh, NY  
Roanoke, VA  
Rockford, IL  
South Bend, IN  
Springfield, MO  
Toledo, OH  
Tri-Cities, TN

#### USA 3000

Chicago/O'Hare, IL – **Service ends 4/4/10**

#### Vision Airlines

Gulfport-Biloxi, MS – *(Beau Rivage Resort & Casino)*

## **International Flights**

### **Transat Holidays**

*(CanJet)*

Halifax, Canada – **Seasonal Service ends 5/11/10**

### **Sunwing Airlines**

Toronto, Canada – **Seasonal Service ends 4/26/10**